



AL-AHLEIA SWITCHGEAR CO. K.S.C.C.
STATE OF KUWAIT

36kV GAS INSULATED SWITCHGEAR

Fully type tested gas insulated extensible switchgear offers single / double busbar metal enclosed construction. It consists of fixed VCB, 3 position disconnecter, CT/VT (as applicable) and air insulated cable box. A vacuum circuit breaker is used for switching of short circuit / operating currents and SF6 gas is used to insulate all HV parts.



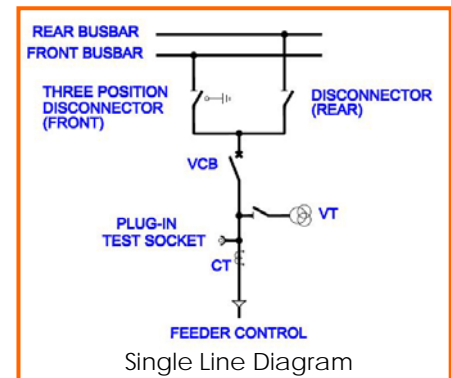
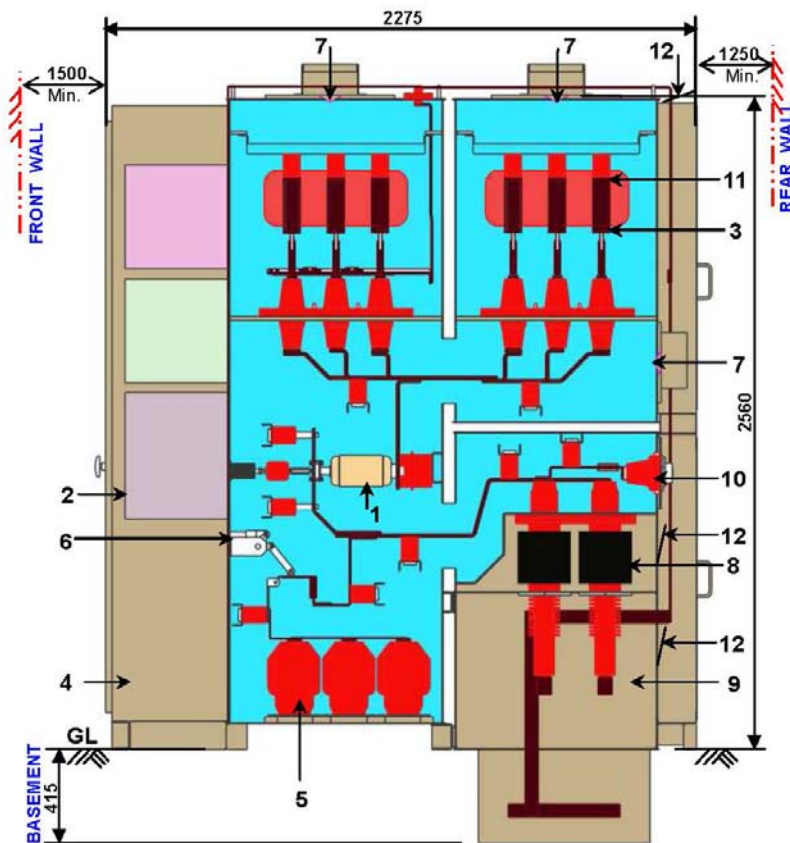
Internal Arc Fault Tested

TECHNICAL DATA

Type	: AF36
Voltage rating	: Up to 36kV
Frequency	: 50 Hz / 60 Hz
Normal circuit current	: Up to 2500A
Normal busbar current	: Up to 2500A
Short circuit breaking current	: Up to 40kA
Short time rating-Main circuit	: 25kA-3sec (62.5kA peak) : Up to 40kA-1sec (104kA peak)
Earth Circuit	: 26.3kA-3sec (66kA peak) : Up to 40kA-1sec (104kA peak)
P.F. Withstand voltage	: 70kV r.m.s
Impulse withstand voltage	: 170kV peak
Internal Arc Fault Test	: Up to 40kA-1sec, Criteria 1 to 5 as per Annexure A of IEC 62271-200
Degree of Protection	: As required.
Applicable Standards	: IEC 62271-200 / IEC 62271-100 / IEC 62271-102

SALIENT FEATURES

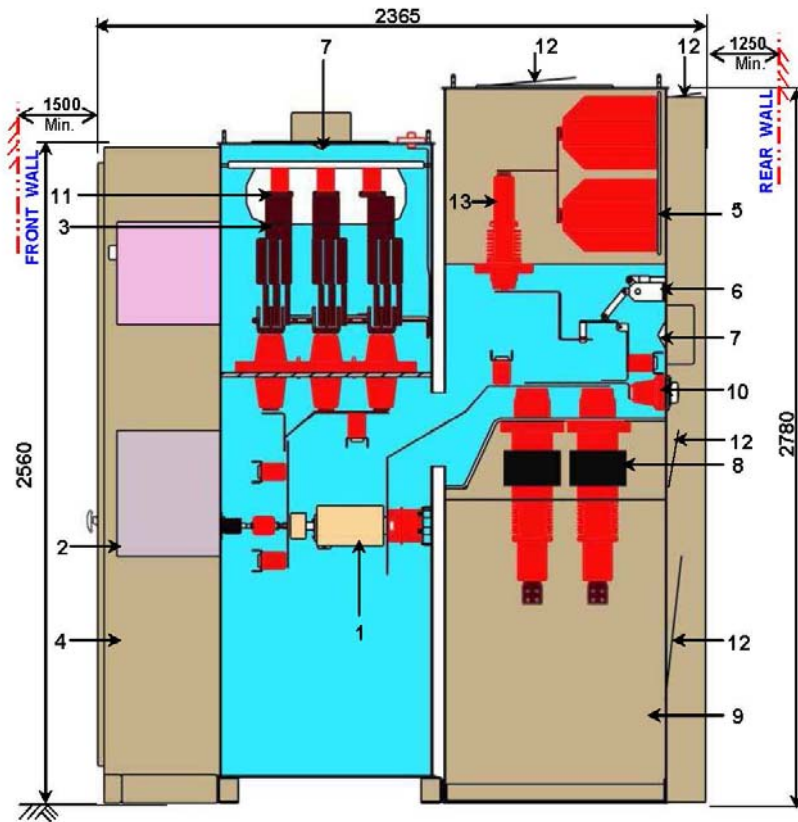
- All HV parts assembled inside hermetically sealed corrosion proof steel tanks and filled with SF₆ gas, hence no effect of external environment.
- Sealed for life as per IEC 62271-200 & IEC 60694.
- Safety interlocking between 3P disconnector and VCB.
- Current transformers mounted outside gas compartment for incomer / outgoing bays and mounted inside for Bussection bays.
- VT is provided with disconnector to facilitate cable testing.
- Cable box suitable for XLPE/PILC/Plug in cable termination.
- Provision of power cable earthing and busbar earthing through 3 position disconnector switches and VCB.
- Provision for power cable testing.
- Internal fault protection through rupturing discs, gas paths and relief flaps.
- Gas pressure monitoring for each compartment.
- Motorized operating mechanism for 3P disconnector (Optional).
- Motorized / Manual spring closing mechanism for VCB.
- Separate control relay panel (as required).



- 1) Vacuum Circuit Breaker
- 2) Operating Mechanism
- 3) 3 Position Disconnector
- 4) L.V Compartment
- 5) Voltage Transformer
- 6) V.T Isolation Device
- 7) Rupture disc
- 8) Current Transformer
- 9) Cable Compartment
- 10) Test plug for Cable Testing
- 11) Busbars
- 12) Pressure Relief Flap

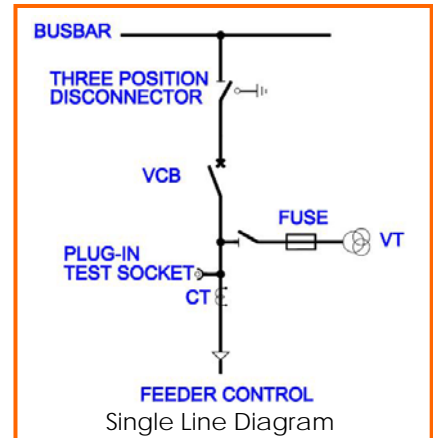
All dimensions are in mm

Typical side view of 36kV, 31.5kA, 2000A, Double Busbar Switchgear



All dimensions are in mm

Typical side view of 36kV, 40kA, 2500A Switchgear



- 1) Vacuum Circuit Breaker
- 2) Operating Mechanism
- 3) 3 Position Disconnecter
- 4) L.V Compartment
- 5) Voltage Transformer
- 6) V.T Isolation Device
- 7) Rupture Disc
- 8) Current Transformer
- 9) Cable Compartment
- 10) Test plug for Cable Testing
- 11) Busbars
- 12) Pressure Relief Flap
- 13) Bushing with V.T Fuse

Gas Pressure:

- Filling Pressure: 0.04 MPa
- Minimum Functional Pressure: 0.02 MPa

OVERALL DIMENSIONS (in mm)

	Typical for 36kV, 25kA/31.5kA	Typical for 36kV, 40kA
Width (W)	666	766
Depth (D)	2275	2365
Height (H)	2560	2780
Weight (kg)	3000	3500



Tel: 822600 - Fax: 4761963
P.O.Box: 25876 Safat 13119 Kuwait
[http: www.ahleiasg.com](http://www.ahleiasg.com)
E-Mail: ahleia@ahleiasg.com